

## SZS Hydraulic actuating cylinders with through-hole

for high speeds, with safety device, stroke monitor, pressure control valve and coolant collector, mounting from the rear

### New version



#### Special salient features SZS 45 bar:

- Short design
- Safety device
- Stroke monitor
- Low Mass
- Low energy dissipation
- Filter of 0.0004 inch fineness must be mounted to the power unit between pump and control valve
- The piston can also be actuated when the cylinder is rotating

Option for stroke monitoring



#### Special salient features SZS 80 bar:

- Safety device
- Stroke monitor
- Low energy dissipation
- Filter of 0.0004 inch fineness must be mounted to the power unit between pump and control valve
- The piston can also be actuated when the cylinder is rotating

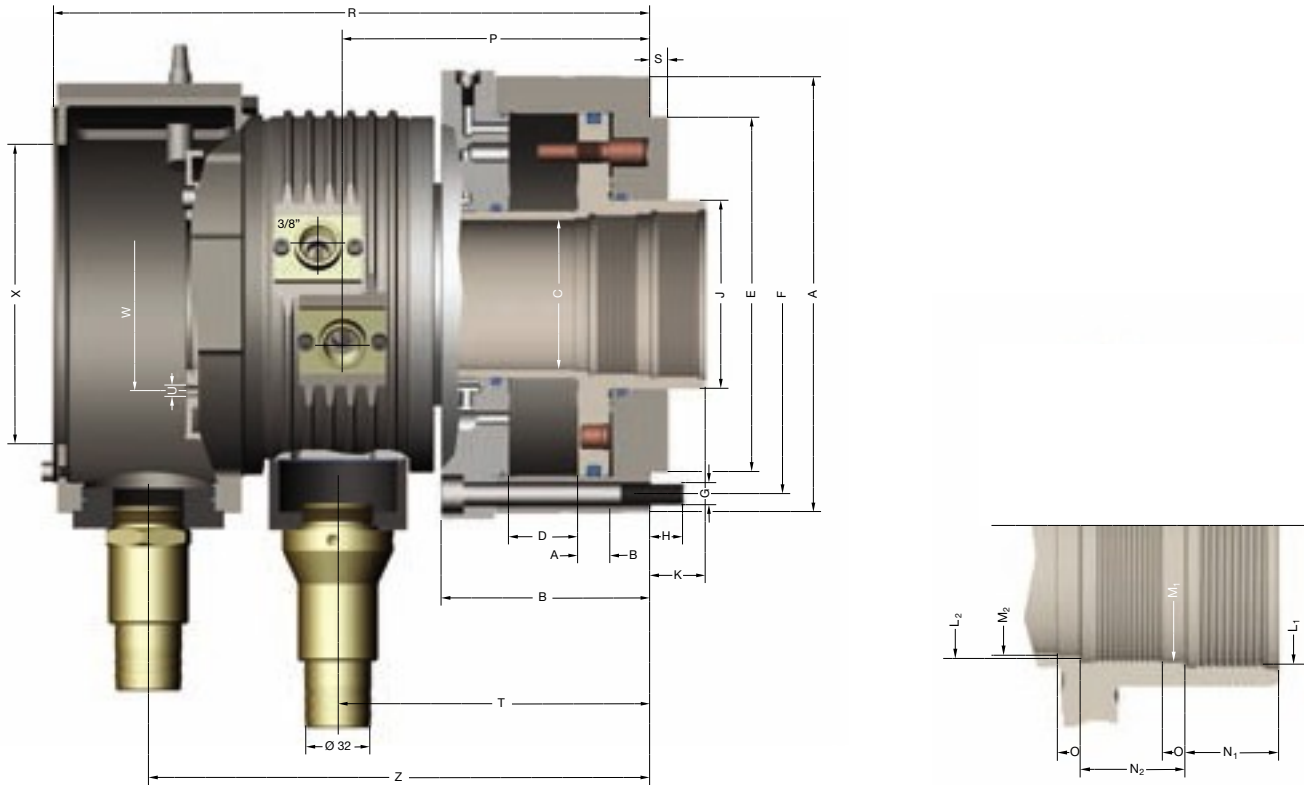
Option for stroke monitoring

Röhm actuating cylinders meet the requirements laid down by the German Employer's Liability Insurance Association by their safety device and stroke control.

For their operation we recommend to use hydraulic oil HLP 32 DIN 51525 (32 Centistokes at 40° C or 100° F).

## Type 559-05 SZS Basic model

for high speeds, mounting from the rear, with safety device, stroke monitor, pressure control valve and coolant collector

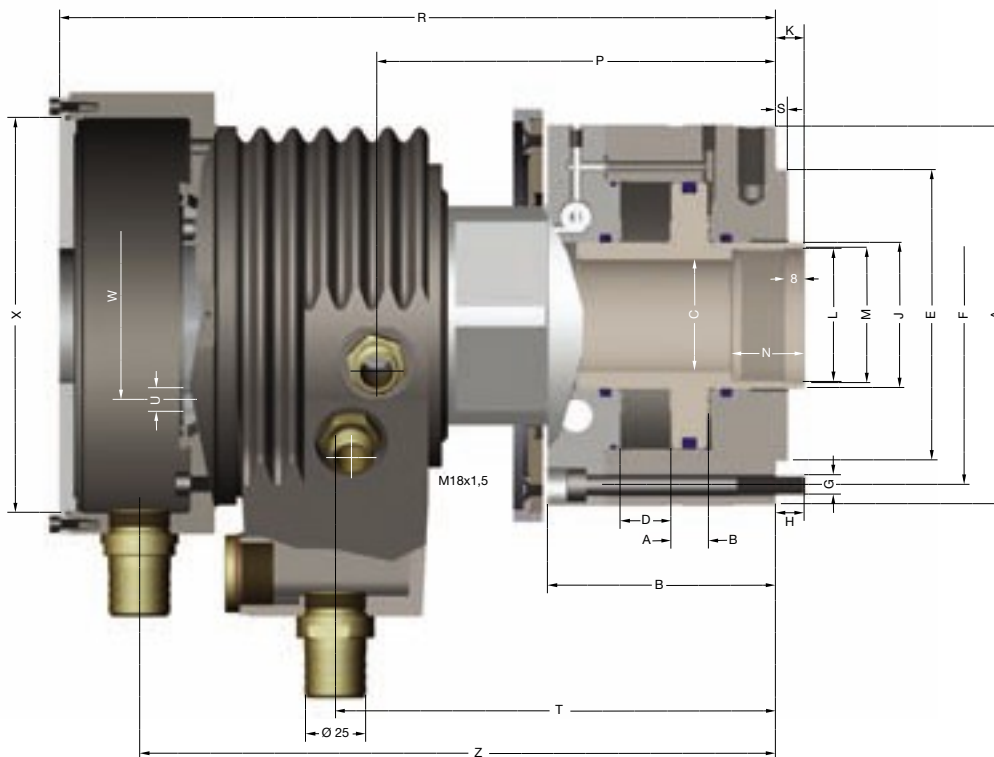


Size	37/70	46/103	52/130	67/150	77/170	86/200	95/225
Id.-No.	432764	432765	432766	432767	432768	432769	432770
With high and low pressure chucking the change-over of the safety valve is guaranteed when chucking pressure: releasing pressure $\approx$ 5,5 : 1	A	142	162	182	197	212	228
	B	83	83	83	94	94	104
	C	37,5	46,5	52,5	67,5	77	86,5
	D stroke	25	25	25	30	30	35
	E <sub>h6</sub>	110	130	140	160	160	180
	F	125	147	165	180	185	210
	G	6xM8	6xM8	6xM8	6xM10	6xM10	6xM10
	H	13	15	15	15	15	15
	J	50	61	70	85	95	105
	K max.	24	22	22	25	25	31
	min.	-1	-3	-3	-5	-5	-4
	L <sup>1</sup>	M44x1,5	M55x2	M60x1,5	M75x2	M85x2	M95x2
	L <sup>2</sup>	M42x1,5	M50x1,5	M55x2	M72x1,5	M80x2	M90x2
	M <sup>1</sup>	42,5	52,5	57,5	72,5	82	92
	M <sup>2</sup>	40	47	52,5	69	77	87
	N <sup>1</sup>	20	25	25	25	25	32
	N <sup>2</sup>	22	25	28	28	28	30
	O	6	6	6	6	6	6
	P	120,5	120,5	120,5	120,5	138,5	155
	R	231	231	231	269	269	292
S	5	5	5	8	8	8	
T	125,75	125,75	125,75	142,75	142,75	159,25	
U	4xM5	2xM6	2xM6	2xM6	2xM6	2xM6	
W	50	68	76	91	91	116	
X	112	122	122	135	145	167	
Z	195,5	195,5	195,5	225	226	249	
Piston area	<b>A</b> cm <sup>2</sup>	74	109,8	142,4	164,5	184	212,6
	<b>B</b> cm <sup>2</sup>	70	103,5	131	152	170	226,2
Eff. draw bar pull (F = 45 bar)	kN	31	46	58	68	76	88
Max. permissible speed	min <sup>-1</sup>	8000	7000	6300	5500	5000	4500
Oil leakage rate (30 bar - 50° C - n max.)	l	2,5	3	3,5	4	4,5	5
Moment of inertia J	kgm <sup>2</sup>	0,02	0,03	0,045	0,07	0,13	0,17
Weight approx.	kg	11	16	18	22	30	38

# RÖHM SZS Hydraulic actuating cylinders with through-hole up to 80 bar, short design

## Type 559-15 SZS Basic model

for high speeds, mounting from the rear, with safety device, stroke monitor, pressure control valve and coolant collector



Size	46/67	67/86	92/110	104/132			
<b>Id.-No.</b>	<b>432760</b>	<b>432761</b>	<b>432762</b>	<b>432763</b>			
A	157	177	203	245			
B	94	95	110	135			
C	46	67	92	104			
D stroke	20	20	35	50			
E <sub>h6</sub>	120	125	155	180			
F	140	160	185	225			
G	6xM8	6xM8	6xM10	6xM10			
H	12	12	15	15			
J	60	85	115	125			
K max.	12	12	25	25			
min.	-8	-8	-10	-25			
L	M54x1,5	M75x2	M102x1,5	M116x2			
M	55	76	103	117			
N	30	40	40	40			
P	180	185	215	245			
R	295	310	355	400			
S	5	5	5	5			
T	181	187,5	215	250			
U	6xM6	6xM6	6xM6	6xM6			
W	70	85	115	125			
X	160	180	200	210			
Z	262	275	310	350			
A cm <sup>2</sup>	66,7	86,4	110	131			
area del pistone - Piston area	B cm <sup>2</sup>	66,7	86,4	110	131		
Eff. draw bar pull (F = 60 bar)	kN	40	51	66	78		
Max. permissible speed	min <sup>-1</sup>	8000	6000	4000	3200		
Oil leakage rate (60 bar - 50° C - n max.)	l	2,5	3	4,0	4,5		
Moment of inertia J	kgm <sup>2</sup>	0,048	0,078	0,23	0,35		
Weight approx.	kg	22	27	50	66		
Max. power loss	KW	0,35	0,4	0,6	0,9		

6  
Hydraulic actuating cylinders

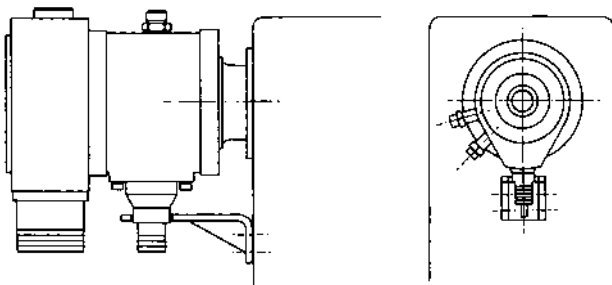
SZS size		37/70	46/103	52/130	67/150	77/170	86/200	95/225
3-jaw chucks	KFD-HS	110	130+140	160+175	200	250	250+315	315-500
	DURO-NC/ES		140+160	175+200	250	315	315	400-630
	KFD-HE		160	200	250	315		400

LHS-L size		26/190	38/251	on request		
2- and 3-jaw chuck	KFD-HS	110	110+130	140+160	175+200	250+315
	DURO-NC/ES		140	140-200	200-250	250-315
	KFD-HE		160	200	250	315
	KFM	130	160	215	280	315
	KFG		160	215	280	315

### Support brackets for cylinders SZS, LHS-L

These cylinder support brackets are required for safety reasons. The configuration and attachment are governed by the machine. The cylinder housing must not be subject to any lateral or longitudinal stresses caused by other equipment, e. g. the housing must be free to align itself with the distributor bearing.

SZS  
LHS-L



Thickness of brackets should be between 6 and 10 mm depending on the size of the cylinder.