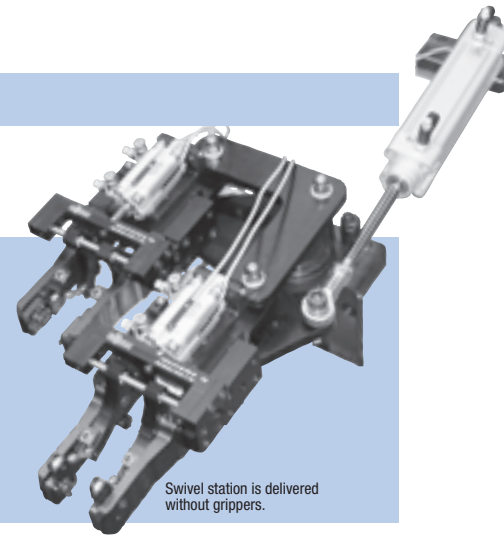
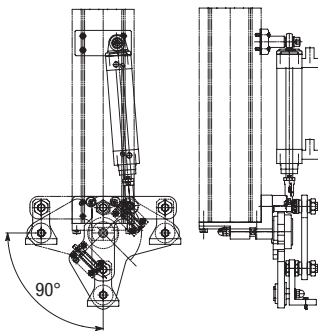


## Parallel grippers RPW-S for gripping and swiveling workpieces (90° and 180°)



Swivel station is delivered without grippers.

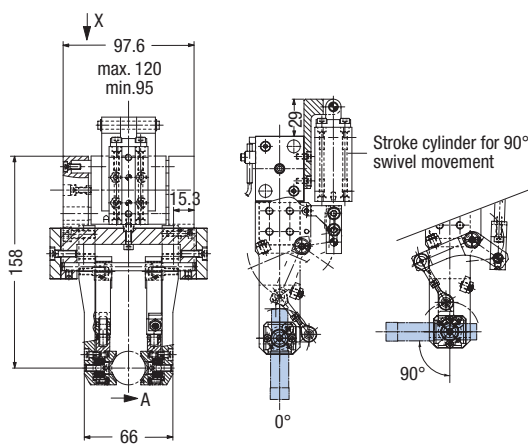
Swivel station RSE can be combined with RPW-S 90° or 180°-grippers. Additional axis for robot or portal



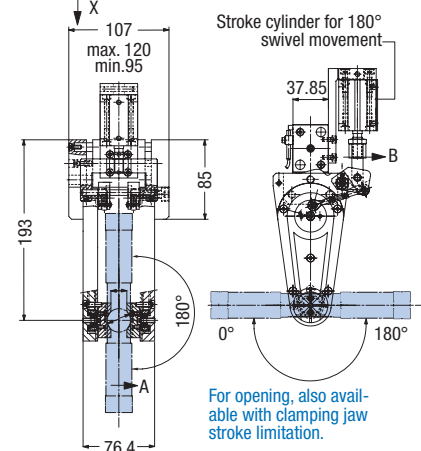
Swivel station RSE with two attached parallel grippers, e.g. RPW-S, allows raw and finished parts to be precisely and synchronously handled within a minimum amount of space without additional axis movements

With clamping jaws and integrated, swivelable clamping inserts Additional axis for robot or portal

Swivel range up to 90°



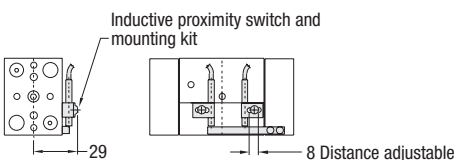
Swivel range up to 180°



Technical specification	RPW-S-375-90°	RPW-S-375-180°	
Total gripping force F at 7 bar	N	250	250
Total stroke	mm	25.4	25.4
Recomm. workpiece weight	kg	1.25	1.25
1.25			
Weight	kg	2.0	2.0
Application pressure	bar	3-7	3-7
Cylinder bore Ø	mm	22.2	22.2
Cylinder capacity (gripper)	cm <sup>3</sup>	9.8	9.8
Operating temperature min./max.			
Standard seals	°C	-35 to 80	-35 to 80
FKM seals	°C	-30 to 150	-30 to 150
Actuation time (gripper)	s	0.20	0.20
Precision (gripper)	mm	0.05	0.05

### Accessories (please order separately)

Sensors	Order no.	Quantity/unit
Mounting kit for the accommodation of 2 sensors	OSMK-10	1
Inductive proximity switch NPN with connector	OISN-014	1 or 2
Inductive proximity switch NPN with connector	OISP-014	1 or 2
Cable with connector	CABL-010	1 or 2
Pneumatic accessories		
Repair kit standard seals	SLKT-56	1
Repair kit for FKM seals	SLKT-066V	1



### Use

The parallel grippers with swivelling clamping jaws are mainly used where workpieces are to be put in a horizontal position from a vertical one, and are to be fed in this position.

These swivelling clamping jaws involve an additional axis in the handling technology. This would eliminate the otherwise necessary re-gripping or intermediate depot.

### Function

A serial parallel gripper, type RPW, does the clamping. The swiveling of the clamping jaws is done by a pneumatic stroke cylinder with leverage fitted to the side. Maintenance work is not necessary.

With the pallet pick-up, the opening stroke of the clamping jaws can be limited advantageously with a stop screw in one of the two swivel positions. As an option, each position can be monitored with inductive proximity switches.

### Gripping force diagram

